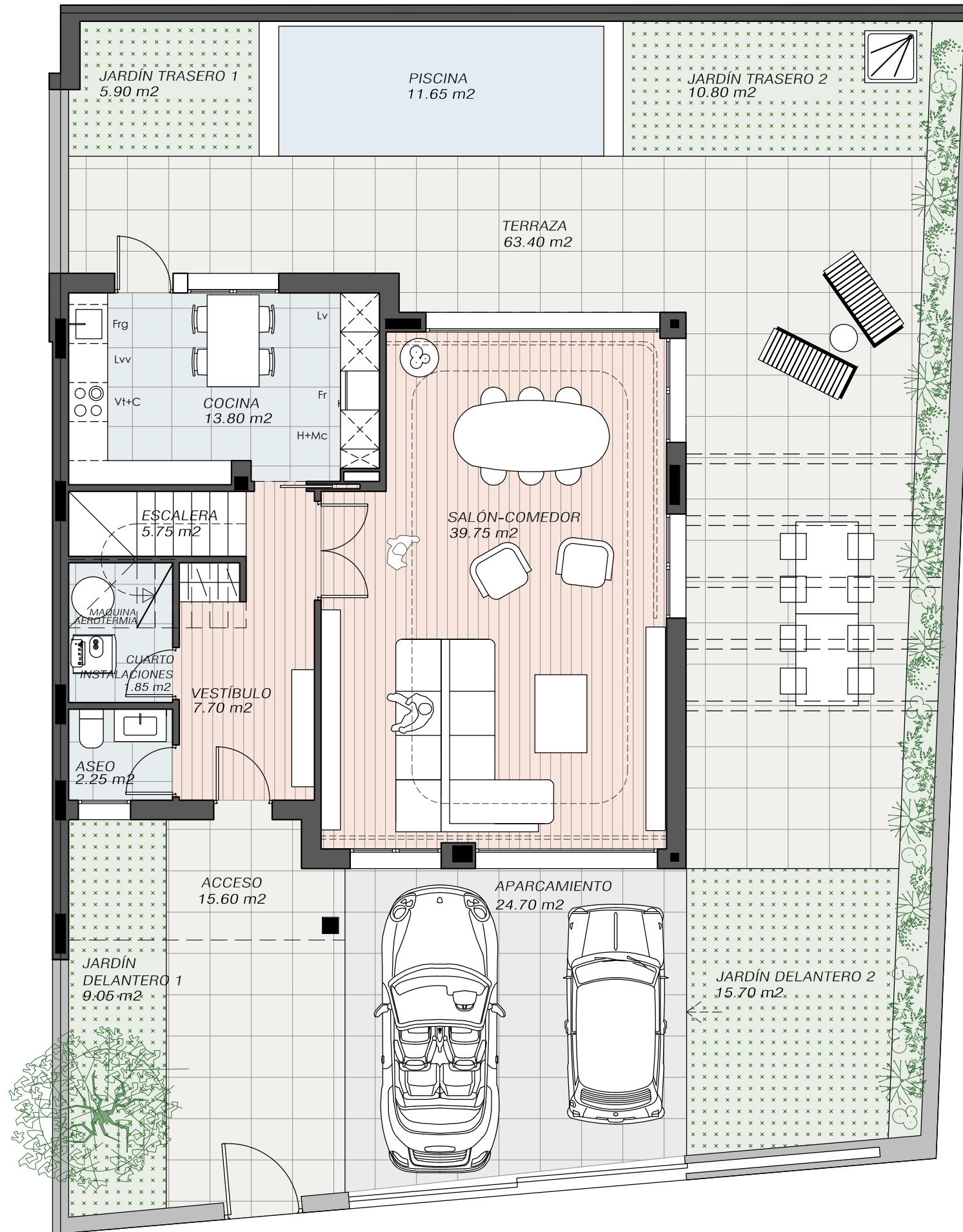
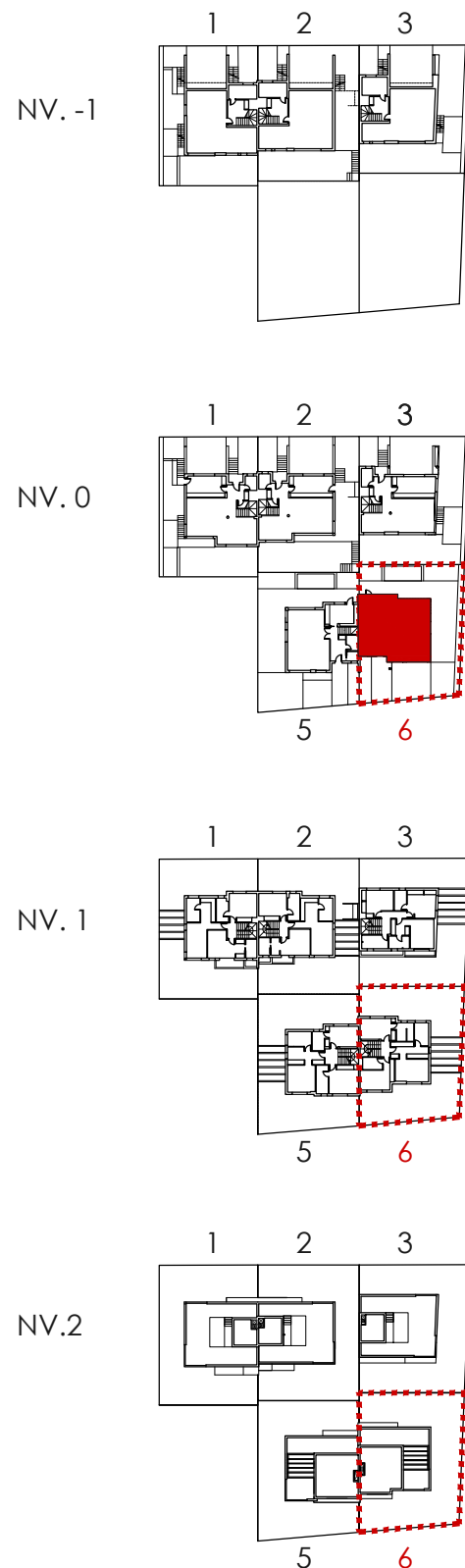


| VIVIENDA 6 | | |
|------------------------------------|----------------------------|----------------------------|
| ESPACIOS INTERIORES | SUP. UTIL.M2 | SUP. CONS.M2 |
| VESTÍBULO | 7.70 m ² | |
| ESCALERA | 5.75 m ² | |
| ASEO | 2.25 m ² | |
| C.INSTALACIONES | 1.85 m ² | |
| COCINA | 13.80 m ² | |
| SALÓN-COMEDOR | 39.75 m ² | |
| TOTAL PLANTA BAJA | 71.10 m² | 82.74 m² |
| DISTRIBUIDOR | 2.65 m ² | |
| ESCALERA | 5.75 m ² | |
| DORMITORIO 1 | 14.25 m ² | |
| VESTIDOR | 9.35 m ² | |
| BAÑO 1 | 5.40 m ² | |
| DORMITORIO 2 | 13.35 m ² | |
| BAÑO 2 | 6.15 m ² | |
| DORMITORIO 3 | 14.00 m ² | |
| BAÑO 3 | 4.05 m ² | |
| TOTAL PLANTA PRIMERA | 74.95 m² | 90.31 m² |
| ESCALERA | 6.95 m ² | |
| BAÑO | 3.70 m ² | |
| SALA | 19.75 m ² | |
| TOTAL PLANTA DE CUBIERTA | 30.40 m² | 38.73 m² |
| ESPACIOS EXTERIORES | SUP. UTIL.M2 | SUP. CONS.M2 |
| ACCESO | 15.60 m ² | |
| JARDINES DELANTEROS | 24.75 m ² | |
| APARCAMIENTO | 24.70 m ² | |
| TERRAZA | 63.40 m ² | |
| JARDINES TRASEROS Y PISCINA | 28.35 m ² | |
| SOLARIUM | 40.25 m ² | |
| TOTAL TERRAZAS Y JARDINES | 197.05 M2 | |
| TOTAL SUPERFICIE ÚTIL | 176.45 M2 | |
| TOTAL SUPERFICIE CONSTRUIDA | | 211.78 M2 |

| | | |
|--|--|--------------|
| PROYECTO 5 VIVIENDAS UNIFAMILIARES Y PISCINAS MANZANA A. UE DEL AUC 08.02 "ANGELITA CAMARERO". MADRID | JUNIO - 2024 | |
| | VIVIENDA 06. DISTRIBUCIONES Y SUPERFICIES. | |
| Félix María González Vello Blanca González García Jaime González García Arquitectos C/ Andrés Mellado 31. 28015 MADRID T. 91.057.61.56 | FRONTAL XXI, S.L. Promotor | 0.5 04/24 |

MANZANA A / PARCELA R6 16A

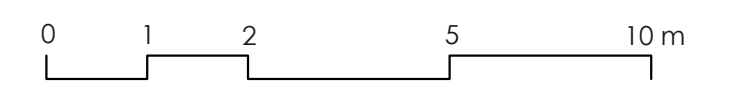
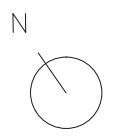
VIVIENDA 6 PLANTA BAJA



| SUPERFICIES ÚTILES | |
|-------------------------|-----------------------------|
| VESTÍBULO | 7.70 m ² |
| ESCALERA | 5.75 m ² |
| ASEO | 2.25 m ² |
| C.INSTALACIONES | 1.85 m ² |
| COCINA | 13.80 m ² |
| SALÓN-COMEDOR | 39.75 m ² |
| SUP. ÚTIL PLANTA | 71.10 M² |
| SUP. ÚTIL TOTAL | 176.45 M² |

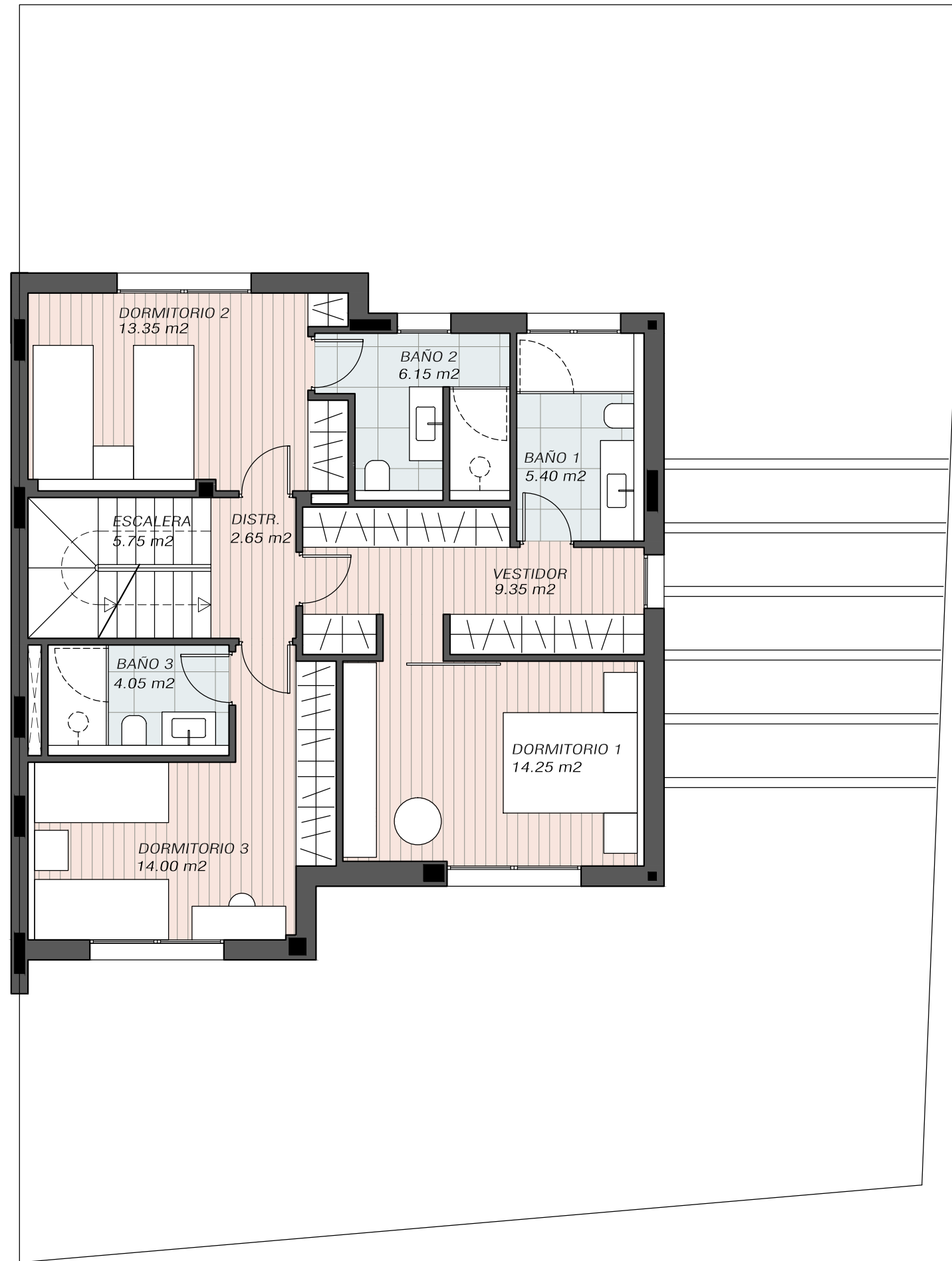
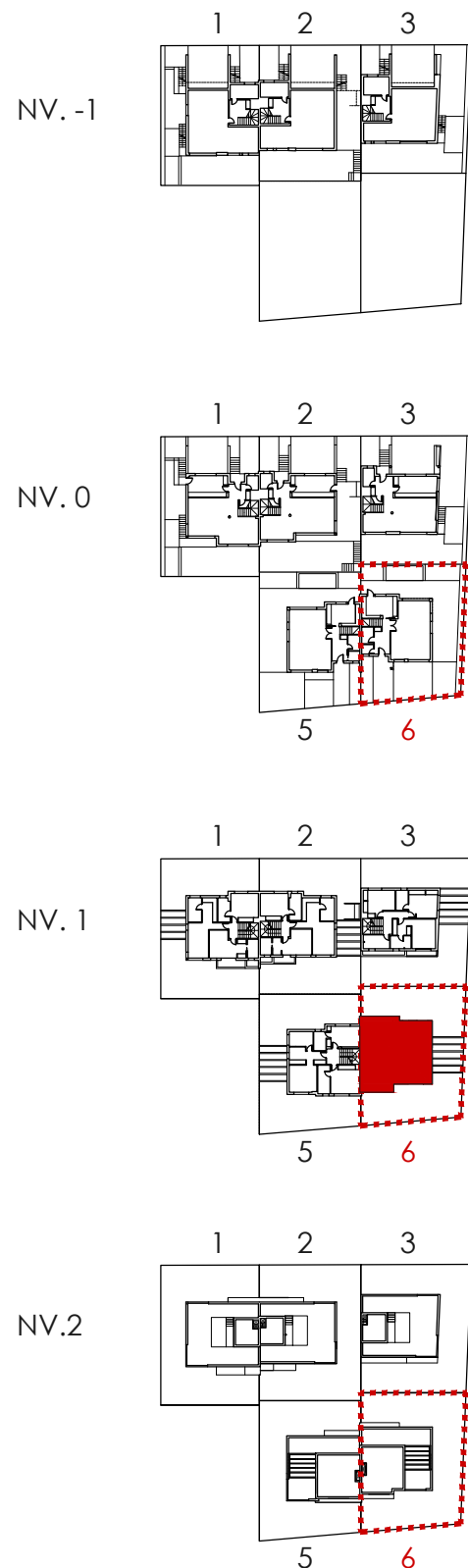
| SUPERFICIES CONTRUIDAS | |
|------------------------------|-----------------------------|
| SUP. CONSTRUIDA PLANTA | 82.74 M ² |
| SUP. CONSTRUIDA TOTAL | 211.78 M² |

| ESPACIOS EXTERIORES | |
|------------------------------------|----------------------------|
| ACCESO | 15.60 m ² |
| JARDINES DELANTEROS | 24.75 m ² |
| APARCAMIENTO | 24.70 m ² |
| TERRAZA | 63.40 m ² |
| JARDINES TRASEROS Y PISCINA | 28.35 m² |



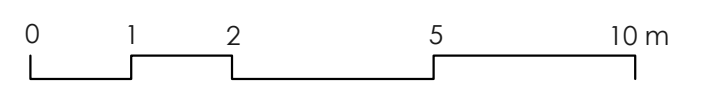
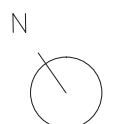
MANZANA A / PARCELA R6 16A

VIVIENDA 6 PLANTA PRIMERA



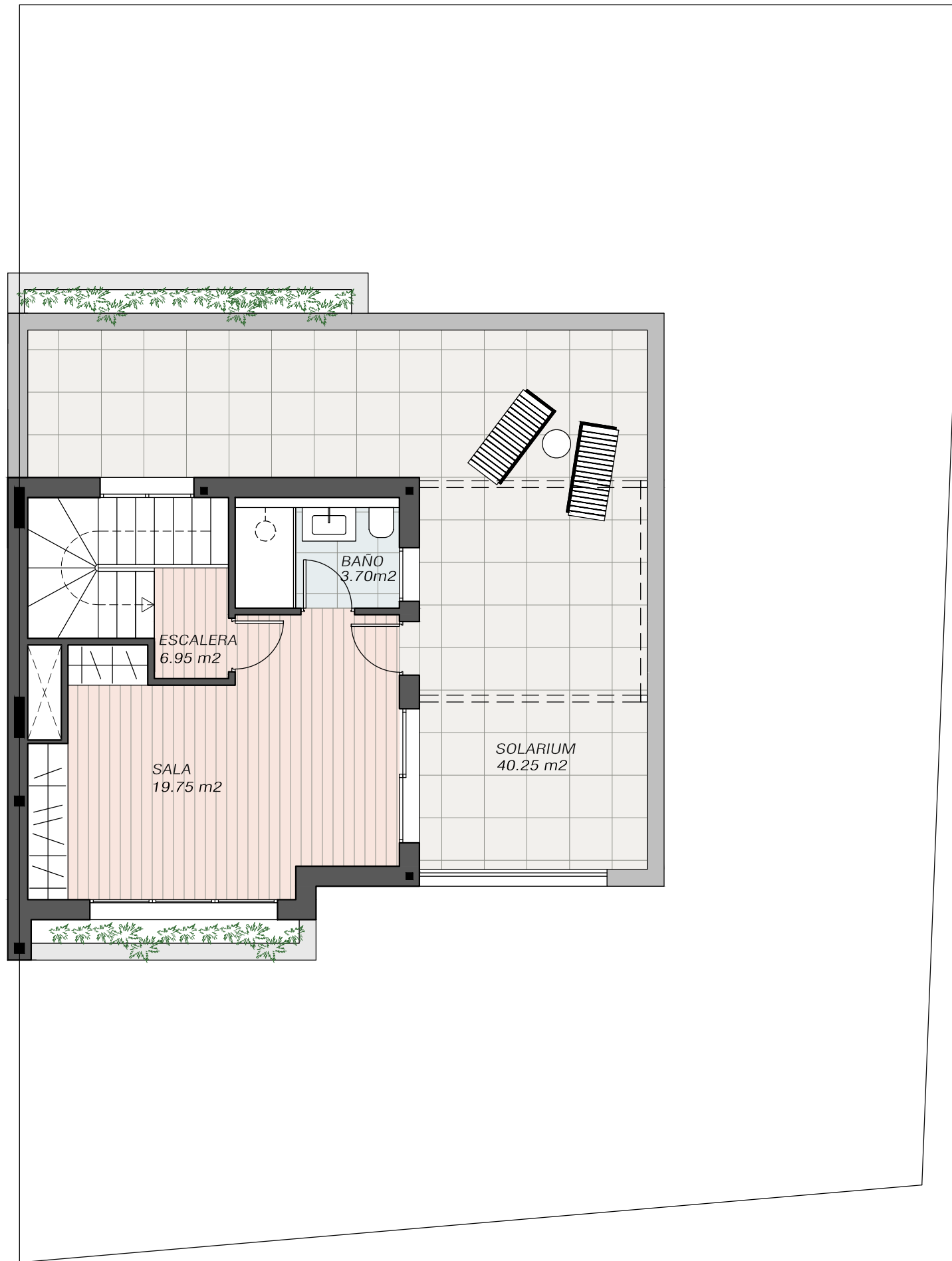
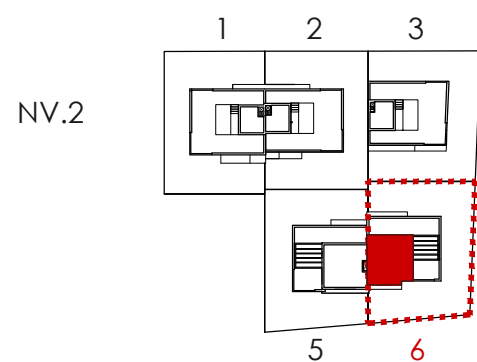
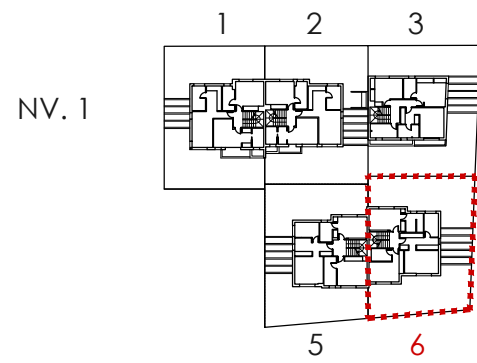
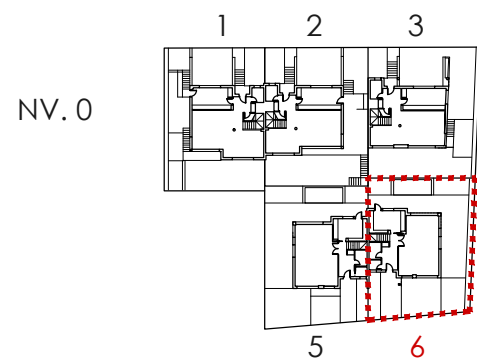
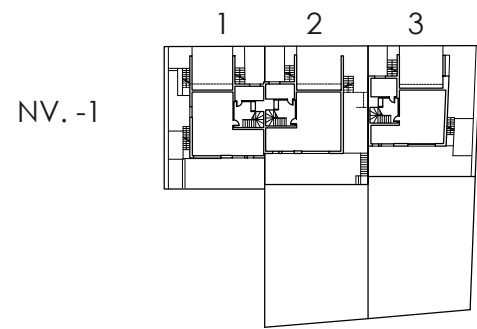
| SUPERFICIES ÚTILES | |
|-------------------------|-----------------------------|
| DISTRIBUIDOR | 2.65 m ² |
| ESCALERA | 5.75 m ² |
| DORMITORIO 1 | 14.25 m ² |
| VESTIDOR | 9.35 m ² |
| BAÑO 1 | 5.40 m ² |
| DORMITORIO 2 | 13.35 m ² |
| BAÑO 2 | 6.15 m ² |
| DORMITORIO 3 | 14.00 m ² |
| BAÑO 3 | 4.05 m ² |
| SUP. ÚTIL PLANTA | 74.95 M² |
| SUP. ÚTIL TOTAL | 176.45 M² |

| SUPERFICIES CONTRUIDAS | |
|------------------------------|-----------------------------|
| SUP. CONSTRUIDA PLANTA | 90.31 M ² |
| SUP. CONSTRUIDA TOTAL | 211.78 M² |



MANZANA A / PARCELA R6 16A

VIVIENDA 6 PLANTA CUBIERTA



| SUPERFICIES ÚTILES | |
|--------------------|-----------|
| ESCALERA | 6.95 m2 |
| BAÑO | 3.70 m2 |
| SALA | 19.75 m2 |
| | |
| SUP. ÚTIL PLANTA | 30.40 M2 |
| SUP. ÚTIL TOTAL | 176.45 M2 |

| SUPERFICIES CONTRUIDAS | |
|------------------------|-----------|
| SUP. CONSTRUIDA PLANTA | 38.73 M2 |
| SUP. CONSTRUIDA TOTAL | 211.78 M2 |

| ESPACIOS EXTERIORES | |
|---------------------|----------|
| SOLARIUM | 40.25 m2 |

